

**THE
GLAMORGAN-GWENT
ARCHAEOLOGICAL
TRUST**



*Newport, Southeast Wales
An urban historic environment under pressure from re-development*

**HALF-YEARLY REVIEW 2005
&
ANNUAL REVIEW OF PROJECTS
2004-2005**

CONTENTS

REVIEW OF CADW PROJECTS APRIL 2004—MARCH 2005		2
GGAT 1	Regional Heritage Management Services	2
GGAT 43	Regional Archaeological Planning Services	8
GGAT 61	Historic Landscape Characterisation	10
GGAT 67	Tir Gofal	11
GGAT 72	Prehistoric Funerary and Ritual Sites	12
GGAT 73	Early Medieval Ecclesiastical Sites	12
GGAT 75	Roman <i>Vici</i> and Roads	13
GGAT 76	Urban Waterfronts	15
GGAT 78	Prehistoric Defended Enclosures	17
GGAT 79	Caerleon Environs Research Agenda	19
GGAT 80	Southeast Wales Ironworks	20
REVIEW OF CADW PROJECTS APRIL 2005—SEPT 2005		23
GGAT 61	Historic Landscape Characterisation	23
GGAT 67	Tir Gofal	23
GGAT 72	Prehistoric, Funerary and Ritual Sites	23
GGAT 75	Roman <i>Vici</i> and Roads	23
GGAT 76	Urban Waterfronts	24
GGAT 78	Prehistoric Defended Enclosures	24
GGAT 80	Southeast Wales Ironworks	24
GGAT 81	Cross-Ridge Dykes	26
CADW-FUNDED SCIENTIFIC CONTRACTS		27
POST-EXCAVATION AND PUBLICATION REVIEW		27
Grey Literature		27
FUTURE PROGRAMME OCTOBER 2005—MARCH 2006		28
GGAT 1	Regional Heritage Management Services	28
GGAT 43	Regional Archaeological Planning Services	28
GGAT 61	Historic Landscape Characterisation	28
GGAT 67	Tir Gofal	28
GGAT 75	Roman <i>Vici</i> and Roads	29
GGAT 76	Urban Waterfronts	29
GGAT 78	Prehistoric Defended Enclosures	29
GGAT 80	Southeast Wales Ironworks	29
GGAT 83	Cross-Ridge Dykes	29

REVIEW OF CADW PROJECTS APRIL 2004—MARCH 2005

GGAT 1 Heritage Management

The Trust has continued to work with Cadw in providing information and advice to improve understanding of the importance of the historic environment as a significant contributor to improved quality of life and place in Southeast Wales.

The Heritage Management work specification agreed between Cadw and the Welsh Archaeological Trusts recognises nineteen discrete core areas of activity; in addition the Trust has undertaken certain specific initiatives.

Information in response to requests from Cadw including data to support projects particularly the Scheduling Enhancement Programme

The Trust continued to provide information and data to Cadw in support of projects and the scheduling enhancement programme.

SMR Information to enquirers in accordance with the Trust's 'Guidelines for Access and Charging' (except paragraph 11)

The Heritage Management Section of the Trust provided individuals, organisations, and communities in the region with archaeological information and advice in pursuit of their projects and interests. During the year 262 enquiries were made as compared with 287 for the previous year. In the case of 25.6% of these enquiries it was necessary to arrange a visits to the Trust's offices to consult the detailed further information files, this was a very slight (<1%) decrease from the previous year.

Year	Total consultations*	Visits to Trust
2000-2001	152	49
2001-2002	217	51
2002-2003	277	59
2003-2004	287	76
2004-2005	262	67

*These exclude consultations for the Countryside Council for Wales, the Forestry Industry and Public Utilities, which are reported elsewhere.

In 2004-2005, the processing of 166 of the enquiries was resourced through the Heritage Management Project, the remaining consultations were made as part of development proposals and the cost met by the enquirer.

Advice on Scheduled Monument Consent Applications

The Trust received 21 Scheduled Monument Consultations, of which four required detailed responses; the remainder were notifications of Welsh Assembly Government's decisions on applications. Our responses varied from supporting applications and recommending the provision of further information to inform the process, through to suggesting appropriate conditions and advising refusal where the interests of archaeology could not be satisfactorily mitigated. The most significant application was that relating to the new visitor centre and associated developments at Cardiff Castle, where the Trust had the opportunity to make a significant contribution

to the eventual project design through a series of meetings with all interested parties and by correspondence.

Site visits/meetings by curatorial staff

In pursuit of our heritage management remit, the Trust made site visits and attended meetings with a wide variety of agencies, both public and private. Emergency callouts were made in Swansea where building work had revealed a well, following a report of human bones at a site in Newport (found to be animal bones), and to respond to a report of timbers revealed only at low tide at Port Talbot.

Information and assistance associated with the Register of Landscapes of Historic Interest in Wales

Liaison and follow-up advice continued to be provided when required to the Countryside Council for Wales with respect to the Register of Historic Landscapes. This work included making presentations at the Historic Landscapes (ASIDOHL) seminar held at Welshpool in June 2004.

General Advice to Local Authorities and National Parks on a range of matters including local and structure plan policies

A revised Memorandum of Understanding has been agreed with the Unitary Authorities in Southeast Wales. This clarifies in a single document the services provided by the Trust to the authorities. Actions in respect of local and structure plan development and policies are reported under GGAT 43 below.

General Advice to local authorities and National Parks on development proposals as part of the development control process.

See below GGAT 43.

Advice and, where appropriate, visits associated with Woodland Grant Schemes work and other Forestry Authority consultations

The Trust continued to provide archaeological services to the Forestry Commission. Seventy-five Woodland Grant Scheme consultations were responded to during the year (one containing over 150 separate woodland areas within Pontypool Estate) as opposed to 54 in the previous year. Ten requests for SMR information to help in the preparation of Native Woodland Plans were received this year. In connection with these consultations visits were made to a number of sites to assist the determination of appropriate actions.

Advice as part of the Tir Gofal agri-environment scheme as outlined in the CCW document "Tir Gofal Historic Environment Liaison Procedures for Historic Features and Archaeological Sites"

See GGAT 67 below.

Provision of information and advice to farmers and other landowners outside the Tir Gofal scheme

Approaches for information and advice have been received from a few farmers and landowners.

Initial enquiries from service industries, such as water and electricity and other utilities

See GGAT 43 below.

Liaison and advice to conservation bodies such as the Countryside Council for Wales and the National Trust

The Trust continued to maintain good contact with the Countryside Council for Wales over a wide variety of issues and projects. The Trust also maintained close relations with other organisations and individuals that have responsibility and interests in national and local historic environment issues.

The Trust also continued to respond to the Environment Agency on the Catchment Abstraction Strategies for Southeast Wales. Generally, we advised that changes in riverine water levels and the local environment could impact on certain classes of archaeological site. It was recommended that the Trust should be consulted on each and every proposal in future. The Trust is represented on the Thaw and Cadoxton stakeholder group, which is being used as the main vehicle to raise awareness of archaeological issues in Welsh Water generally. A useful meeting was held with the Environment Agency's newly appointed archaeologist.

Monitoring the effectiveness of Planning Guidance (Wales) and Circular 60/96 – Planning and the Historic Environment: Archaeology

Both documents are fully and effectively enshrined in planning policy and practice in Southeast Wales. All the regional Unitary Authorities took full regard to the provisions required by central government to protect archaeological interests through the planning processes. No specific actions were required in the reporting period.

Follow-up advice and long-term support for pan-Wales (churches, coastal, etc) and other Trust projects

Churches

The Trust has responded as necessary to consultations from the Diocesan Advisory Committees and other Church in Wales representatives.

Coastal

See advice on maritime environment below.

The wider dissemination of the results of Cadw-funded projects including through the Trust's website

Cadw, in partnership with the Welsh Archaeological Trusts, promotes the need across Wales for disseminating information on archaeological work that has been publicly-funded.

Website

The Trust continued to utilise its website (www.ggat.org.uk) to provide information on regional archaeology as well as a section dedicated to Cadw-funded projects. During the year information added to the website arising from work funded by Cadw included a summary of the historic landscape characterisation undertaken in respect of the Gwent Levels and the Rhondda entries on the Historic Landscapes Registers.

Leaflets and displays

The Trust produced leaflets on the historic landscape characterisation work undertaken in respect of the Gwent Levels and Rhondda historic landscape registrations to accompany the information placed on the website.

The Trust ensured that the leaflet *Archaeology and your planning application* was provided to the regional Unitary Authorities at their respective premises. This information and the accompanying display will assist planning officers and those intending to lodge a planning application as it highlights the importance of addressing

archaeological issues early in the planning process. This display has now been circulated to eight of our Local Planning Authorities.

Posters and fliers were prepared during the excavations at Wind Street in Swansea, the Flood Alleviation scheme in Caerleon, and Nailers Lane, Monmouth, providing information on the findings. General background information continued to be provided to media companies in consideration or preparation of television programmes.

Forums and Workshops

The Trust arranges an annual Regional Heritage Forum with the twelve Unitary Authorities in Southeast Wales. The 2004-2005 meeting was hosted by Torfaen County Borough Council at the Civic Centre, Pontypool, and was attended by delegates from most of the Councils. A range of important issues was discussed with the Trust emphasising the need for the Unitary Authorities to take a more holistic view of their key role in the historic environment, rather than concentrate on planning issues as they do at present. Following formal business a presentation was given on the Blaenavon World Heritage Site.

A number of workshop meetings were attended to discuss such issues as the Countryside Council for Wales's new Countryside Code and the CCW Open Access to the Countryside. Trust staff also attended the launch of the Ravine Woodlife Project, a major woodland conservation project in the Wye Valley, besides attending meetings of standing groups such as the Swansea Environmental Education Forum. The Trust has maintained attendance at the Gower Countryside Forum, which is an advisory body for the management of the Area of Outstanding Natural Beauty. The Trust has contributed to the review of the effectiveness and governance of the Forum carried out this year, and also led a site visit to Penmaen Burrows and Castle for members of the group.

Lectures and talks

Talks and lectures were given to British Archaeological Association's annual meeting at Cardiff, Cardiff Archaeological Society, the IFA Wales/Cymru group, SELRC, Treboeth WI. A series of six talks on medieval castles was given to the Friends of Oystermouth Castle.

Open Day

In association with Swansea Museum the Trust organised an Open Day at the museum on Saturday 17th July 2004. This was arranged as part of the Council for British Archaeology's National Open Day and proved very successful. A number of other local organisations taking part including the West Glamorgan Archives Service, Swansea University and the Swansea Metal Detectorists Club. Interactive events, such as prehistoric pot making and various competitions, introduced children to archaeology. The event was extremely well attended, as the venue is more readily accessible than the Trust's Offices where it was previously held, and attracted passers-by who had not noted any of the advance publicity. The museum reported a substantial increase in visitor numbers over a normal Saturday.

Monmouth Show

On the 3rd August 2004 the Trust, in conjunction with the Monmouth Archaeological Society, exhibited at the Monmouth Show. Various exhibitions and literature from Cadw, the Trusts and the National Museum were displayed along with recent excavation material provided by the Monmouth Archaeological Society. The Friends of the Newport Ship also attended with a small exhibition. Figures for the show



Pottery Making at the Monmouth Show

stand was within the Science and Technology pavilion emphasis was made on having the interactive element of the Sites and Monuments Record available on computer for the public to consult. Organisers considered that about 35,000 people passed through the pavilion.

Advice and support to community and other organisations seeking support for heritage projects

The Trust continued to assist the Wye Valley AONB with their HLF bid, providing advice on heritage management proposals and outreach issues for the Angiddy and Whitebrook valleys near Tintern. In June 2004 the Trust contributed to a day of site visits to archaeological sites in the area.

The Trust continues to offer support, advice and information to a number of community groups applying for various grants for heritage projects. They include the Village Alive Trust, Monmouth, the Bettws

Heritage Group, the Valleys Cycle Club, Swansea Promenade Infrastructure Network (SPIN), Friends of Oystermouth Castle, the Llanrhidian Community Hall Development Trust and the Communities First Project for Bedlinog and Trelewis.

exceeded 21,000, which provided a good means of reaching out to the local farming and other communities.

National Eisteddfod

The Trust took part in the National Eisteddfod held at Newport between July 31st and 8th August 2004. The Trust's first involvement in this national cultural event was enabled through the free access provided by the Chairman of the Science and Technology pavilion. Cadw and Trust exhibitions were displayed with accompanying leaflets and booklets. As the



Display at the National Eisteddfod

Responding to consultations from the Welsh Assembly Government and other organisations on proposals which affect the historic environment

As part of our regional heritage remit the Trust is consulted on a wide variety of matters. During the year we responded to the following documents.

From	Document title
Welsh Assembly Government	Delivering Better Development Plans for Wales
Newport City Council	The Fourteen Locks: A Draft Development Strategy
Welsh Assembly Government	Draft Technical Advice Note 8: Renewable Energy
Cadw	Community Strategies and the Historic Environment
Welsh Assembly Government	Review of the Planning System in Wales
Countryside Council for Wales	CROW Act 2000 - Consultation on proposals for Regulations 42
Welsh Assembly Government	Consultation on the new EU Rural Development Regulation
Welsh Assembly Government	Guidance on the Statutory Duties on Relevant Authorities to have regard to the purposes of National Parks and AONB's

Dealing with consultations connected with the Countryside Rights of Way Act

As a recognised consultee the Trust continued to respond to the provisions of the Countryside Rights of Way Act, the government's flagship policy for providing greater public access to and enjoyment of the countryside. The historic environment is a key issue providing better opportunities to manage and conserve archaeological sites and occasion for public education and outreach. Throughout the year we have received a number of conclusive maps for various areas in Southeast Wales and we anticipate being further involved in historic environment issues as the project develops detailed tangible proposals to meet its objectives.

As part of this project the Trust represented the other Welsh Archaeological Trusts at the Wales Off-Road Motorcycle Conference in Merthyr Tydfil. Trust staff also attended a conference on illegal off-road motorcycle use organised by the Safer Swansea Partnership, which amongst other issues raised concern regarding the threat of increased damage to archaeological sites.

Dealing with consultations connected with the Uncultivated Land and Semi-natural Areas Provisions of the Environmental Impact Assessment Directive

During the year the Trust continued to receive consultations in connection with environmental assessment for proposals to alter farming practices. This scheme is intended to assess the impact of changing agricultural regimes such as conversion to arable from current grazing. Clearly, the impact on hitherto undisturbed archaeological sites in pasture could be severe. As the body charged with providing professional archaeological advice, this Trust responded to the Agriculture and Rural Affairs Department of Welsh Assembly Government. This project is another good example of the developing relationship that this Trust has with organisations involved with the conservation of our rural historic environment.

Curatorial advice in connection with the marine environment

The Trust has been consulted on large-scale developments such as windfarms and aggregate extraction in the marine environment, particularly in the Severn Estuary. The Trust has liaised closely with Cadw to ensure consistency of advice on applications that fall outside the normal planning processes and for which there is currently no established or perceived professional methodology for responding. Members of Trust staff attended the Wales Coastal and Maritime Partnership Conference held in Swansea, which was concerned with integrated coastal zone

management. The Trust has maintained its role within the Association of Severn Estuary Relevant Authorities (ASERA) and attended the launch of Management Scheme for the Severn Estuary European Marine Site at Slimbridge in September. During the year attendance and responses to the Swansea and Carmarthen Bay Coastal Engineering Group were maintained with the Trust regularly completing proforma reports for the Group. In particular, we are keen to be involved with the processes of coastal monitoring, such as aerial photography, which can discover newly exposed areas of coastal peats and archaeological material and highlight changes in coastal configuration resulting from rises in sea level and erosion. With this improved information it should be possible to predict threats to coastal archaeological sites and propose mitigation measures such as marine defence or excavation.

Specific Proposals

The Trust undertook the following specific Heritage Management proposals:

- Assistance in the completion of 'Introducing' leaflets for Landscape Characterisation projects.
- Organise the fifth Regional Heritage Forum with the Unitary Authorities.
- Update the Cadw portion of the Trust website to include new project information.
- Assistance in organising the 2004-2005 CBA National Archaeology Day.
- Prepare displays for and attend the National Eisteddfod (Newport) and regional agricultural shows.
- Ensure that the 'Archaeology and your Planning Application' display (and leaflets) continues to be displayed at the twelve regional Unitary Authorities.

Details of these have been provided above.

GGAT 43 Regional Archaeological Planning Services

Planning Statistics 2004 –2005 (see Appendix 1)

The archaeological planning services provided on behalf of Cadw require the Trust to initially assess all the region's planning applications and to notify the planning authorities of archaeological constraints to proposals, giving information and specific recommendations on the best course of action required to protect archaeological interests whilst enabling permitted development. Thereafter, and with the combined resources provided by all twelve regional authorities, the Trust's Development Control Section provide further detailed services, such as the provision of archaeological briefs for pre-determination assessments, approving detailed specifications submitted by developers and monitoring the work from inception and fieldwork to the production of the final report. The Section has also been involved in a large number of planning appeals providing information and written advice to the Planning Inspectorate of the Welsh Assembly Government.

The 2004-2005 detailed statistics of the responses to planning applications made by the Trust, which vary from recommending desk-based assessments and intrusive field evaluations in the predetermination period of planning applications through to the attachment of appropriate archaeological conditions on planning consents, are attached as an appendix to this review.

We have reported significant increases in the number of planning applications being received by the Local Planning Authorities (LPAs) in Southeast Wales over the last few years. The corresponding increase in the workload of the Development Control Service has created severe pressure on Officers to meet the target response times (21

days) and to provide the service required by the LPAs in South Wales. This trend continued during the year with an increase of over 1,500 registered applications to a new high point of 22,357. These increases and the strain that they have been causing on the service has been acknowledged by Cadw and the LPAs, it is therefore welcomed that during the year an increase in funding for the service from both parties has been agreed for the new financial year.

The production of Unitary Development Plans (UDPs) in Southeast Wales has been an on-going process since the formation of the Unitary Authorities in 1996. Two UDPs, Monmouthshire and Newport, were examined at Public Inquiries this year and the section produced evidence both in writing and in person to the Inspectors. A considerable amount of information and advice was also provided to Neath Port Talbot in regard to sites not included in their deposit UDP. At the end of the year the Welsh Assembly Government announced that strategic planning in the Unitary Authorities would be changed and that UDPs would be succeeded by Local Development Plans (LDP). This change will require further advice to be provided to the Unitary Authorities and it is hoped that the service will be able to work closely with them in producing suitable policies to protect and enhance the historic environment.

The increase in the number of overall planning applications also reflects the increasing number of large scale and complex development projects being initiated in Southeast Wales. The service has committed considerable time and effort in ensuring that the historic environment is carefully considered during the planning process and that mitigatory measures including preservation in situ and excavation are included in these developments. This year these developments have included the new visitor centre at Cardiff Castle; regeneration proposals at the Yorkshire Imperial Metals Site in Swansea; extensions to the Garn Goch Industrial Estate, Swansea; the construction of the Ryder Cup Golf Course at Celtic Manor Resort, Newport; the construction of a superstore on the site of the Llynfi Ironworks in Maesteg; the extension of the Caerleon Golf Course and the redevelopment of the Merthyr Vale Colliery at Nixonville.

In many of these cases there will be a requirement for significant archaeological investigation prior to and during the construction of the developments; however, this year only one major archaeological excavation took place in the region at Salubrious Place, Swansea.

One type of development saw a huge number of increased applications this year – large windfarms. The Government's desire to reduce "greenhouse gases" has led to proposals for windfarms being made in the majority of the Unitary Authority areas in Southeast Wales. All such developments require Environmental Impact Assessments to be prepared and Archaeology and the Cultural Heritage is an important part of these studies. Whilst it is often the case that the direct impact of the construction of the turbines, access roads, power lines and other elements of the windfarm can be designed to be minimal; the indirect effect on the setting of individual monuments and the overall historic landscape can be more severe. The severity of this impact is difficult to calculate especially as such analysis can be clearly influenced by personal opinions. The section therefore welcomed the publication of a guidance for determining this impact by Cadw last year (see Guide to Good Practice in the Register of Landscapes of Historic Interest in Wales in the Planning and Development Process 2003) and the impact on the historic landscape of a number of proposed windfarms in the Region was analysed using this guidance during the year. This detailed analysis

provided a clear (unbiased) assessment of the impact of these windfarms and allowed the Section to advise LPAs with confidence on their impact on the historic landscape. The section has continued to provide advice to the Utility Companies and the Environment Agency on the impact of their works on the archaeological resource. Eighty-two consultations were received during the year leading to a number of discoveries being made during archaeological monitoring of linear developments and on two occasions well-designed monitoring programmes on Environment Agency Flood Alleviation Schemes led to the significant discovery, investigation and recording of a post-medieval bridge at Caerleon and fish traps at Rhumney Great Wharf.

GGAT 61 Historic Landscape Characterisation

Blaenavon

Characterisation work on the Blaenavon Outstanding Historic Landscape has been completed. The work entailed desktop searches, including: consultation of the Sites and Monuments Record and the transferral of information digitally to workspaces. Relevant developer and other reports were identified and secondary sources



Blaenavon Historic Landscape, HLCA 006 Blaenavon Ironworks

compiled. Cadw (listings and Scheduled Ancient Monuments), The Royal Commission on the Ancient and Historical Monuments of Wales (National Monuments Record further information from Endex, Coflein, and surveys), and Central Registry for Aerial Photography in Wales (available air photographs) were also consulted. In addition, the National Library of Wales has been contacted for database search for relevant source information and copies of the first three editions of the OS 6-inch maps were obtained. All readily

available Tithe and estate maps were consulted at the Gwent Record Office, the National Monuments Record, The Royal Commission on the Ancient and Historical Monuments of Wales and the National Library.

MapInfo workspaces were created with Sites and Monuments Record/National Monuments Record tables, Listed building and Scheduled Ancient Monument information, and Countryside Council for Wales information on designated and other areas. Paper base maps of the area were assembled showing the resulting preliminary Historic Landscape Character Areas at 1:50,000 and 1:25,000. The preliminary Historic Landscape Character Areas were then digitised as accurately as possible as polygon areas (MapInfo Tables). These were later subject to a process of revision to take into account additional information from the field visits and other sources, including the suggestions of members of the Blaenavon Industrial Landscape Historic Environment Working Group. Proformas were used during the field visit to form the basis of a written record, supplemented by photographic record. The field visit included a review of the architectural heritage character of the area with input from Cadw staff. Aerial photography added to the understanding of the patterns and texture of the landscape and led to further revision. Revised digital

maps (including MapInfo tables, workspaces and layout windows) were then completed for each of the areas as the basis for map figures to be used in the final report.

It was found that the landscape lent itself to being divided along the lines of industrial transport, processing, and settlement areas: the transport/communication corridors (road, rail, tramroad and railroad); the iron works themselves; industrial and other settlement areas; the areas' relict mineral fields (coal, iron ore and limestone).

The research undertaken was fundamental to the study, and allowed an understanding of the complexity and integrity of the industrial landscape of the area which represents an important and largely complete microcosm of industrial workings associated with the iron industry, quarries, furnaces, forges, ironworks, transport links and industrial settlement.

As a result of the above rapid survey, map regression and site visit, a total of 21 character areas were identified. These included four industrial urban areas, two industrial transport settlement areas, two industrial iron-processing areas, and at least five surviving extractive areas.

It was noticeable that the landscape character was evolved from the late 18th century/early 19th century, with later additions generally reinforcing the pre-existing character. Urban industrial development began on a limited scale close to the ironworks, with the pre-existing agricultural settlement probably absorbing much of the initial dwelling requirement. Industrial settlement expansion developed first in ribbon fashion along Church Road and in the area along King and Queen Streets from c1800 with a number buildings surviving from the period c1800–1840. Associated settlement, also relating to the canal system, develops from the early 19th century (HLCAs 014 and 015). By the publication of the 1st edition OS (1880s) the grid layout of the urban core of Blaenavon (HLCA001) had been established. Later editions of the OS detail the turn of the 19th/20th century urban expansion over former scattered agricultural/industrial settlement (HLCA002). During the 1850s satellite settlements connected with the new works at Forgeside (HLCAs 012 and 003) emerge.

Gwent Levels

The summary of the results of the detailed characterisation of the Gwent Levels Historic Landscape, the subject of editing and reformatting in the previous financial year, was posted on the web in August 2004 following translation into Welsh.

GGAT 67 Tir Gofal

The Tir Gofal project and the opportunity it provides to better conserve and manage aspects of the heritage of Wales on farm land, hitherto not readily accessible, continued to be a success in the region with tangible benefits for the conservation of the rural historic environment and for general outreach to farmers and landowners. In line with Cadw's requirements, the Trust responded to successfully ranked applications (HE1 Stage) for the Tir Gofal scheme. For each application detailed information and advice was provided to the Countryside Council for Wales (CCW) and recommendations made on whether an archaeological site visit was required to assess sites and landscapes. During the year the Trust processed 73 consultations (of which eleven were additional lands) which were used by CCW's project officers when making their own farm visits. Fifteen farms were identified as requiring archaeological farm visits (HE2s).

The Trust continued to meet with Cadw and the Countryside Council for Wales and with regional representatives at a variety of meetings during the year.

GGAT 72 Prehistoric Funerary and Ritual Sites

This year's work was of very limited scope, consisting of a fact-finding exercise to determine whether there is likely to be any market for the publication of information on prehistoric funerary and ritual monuments in either the schools sector or the tourism sector. A different approach was taken to the consultation in each sector. In the education sector the consultees were the humanities advisors to the ten regional education bodies, who could reasonably be expected to have an informed understanding of the nature of the material and the implications of different methods of presentation. Consultation was therefore free-form. In the tourist sector, it was based more on gauging the market as represented by the sort of information which was requested by the public and the most popular and convenient formats for presenting it. It was also thought that there would be a very low response to a free format as it would be more difficult to answer. Consultation here therefore took a more mechanistic form, as a simple questionnaire, with a limited number of yes/no responses and space for comments if the respondent wished to make any.

The ten humanities advisors in the education sector were contacted, and only one failed to reply. It was found that very few schools teach the relevant study unit, Early Peoples, and there is therefore little call for detailed material, such as would be included in a workpack. Wallcharts, however, have a much wider application for both the range of uses to which they can be put and the range of ages for which they are suitable. The consensus was for a pan-Wales wallchart suitable for a wide range of ages, with details about websites where further information can be found on regional/local examples.

With one exception, all the tourist authorities in Wales, other than the purely local, were circulated as to whether they felt there was a market for booklets of either Wales-wide or more regional/local interest, or for free leaflets or wallcharts. The exception is Newport, which was omitted as it has only eleven funerary and ritual monuments all of which are inaccessible on private land. The results of the survey indicated that there was not enough interest for Cadw to consider trying to form a partnership with the Unitary Authorities as to produce a booklet of Wales-wide interest, although if one were to be produced by other means, there would be an outlet through the Snowdonia and Brecon Beacon National Parks and some of the local authority tourist bodies. There was however the possibility of partnerships with a few local authorities to produce booklets of more local interest.

GGAT 73 Early Medieval Ecclesiastical Sites

For all four Trusts, the 2004-05 work has consisted of the preparation of a paper on a topic arising out of the pan-Wales project, with particular relevance to their own area of the Principality, to be given at a conference on the Early Medieval church to be held at Bangor in September. In our case this was an examination of the extent to which Early Medieval ecclesiastical sites were later to become the sites of priories and granges of the Catholic regular orders, and how the southeast compared with the rest of Wales in this respect. The availability of reasonably consistent data on the early sites across the whole of the Principality has for the first time made it possible to carry out these comparisons. The paper will be published as part of the conference proceedings.

Whilst there was very little change to broad outlines of the picture which has long been established (Benedictines only in the south, *clasau* in the north adopting the Rule

of St Augustine, Cistericians with a wide appeal to Welsh and Normans alike), some surprising details have emerged. The transformation of the native house into the Augustinian priory can be seen to be a strategy adopted by houses of culdees rather than *clasau* in general; it is also noticeable that there were no Augustinians in St Asaphs. None of the southern houses is likely to have been the result of a straightforward transformation; the general popularity of the Augustinians with the English establishment may have been as much of a factor in the establishment of Carmarthen Priory than its previous history. The relatively high proportion of Cistercian properties in Llandaff which have indicators that they were originally pre-Conquest ecclesiastical is not matched anywhere else in Wales; this one diocese contains over 75% of all examples. However, there is evidence that the sequence of events did not necessarily take the form of the invading Normans confiscating land from the Celtic church in order to donate it to monasteries in Normandy or England. In some cases there must have been a significant lapse of time between one event and the other, and in others it was Welsh landowners that were involved rather than Normans. With regard to the Benedictines, it is clear that their presence in the diocese of Llandaff was much more firmly established than in St Davids with five conventual priories as against two.

GGAT 75 Roman Vici and Roads

Work on this project consisted of two components, a desk-top survey of evidence for the Roman road system in Southeast Wales, and fieldwork on the extra-mural areas at Gelligaer and Neath, together with air photograph search and walk-over survey of an area adjacent to the presumed course of the Roman road running north from the fort at Abergavenny where metal detector finds and cremations had suggested that there might be a significant Roman presence.

Roads Survey

The survey of the roads identified 25 definite or possible sections of Roman road. The evidence for these was described and mapped following the format developed by The Clwyd-Powys Archaeological Trust, and recommendations were made for further work for each section.

Gelligaer

The fieldwork at Gelligaer and Neath took the form of excavations to test the validity of the results obtained from geophysical survey the previous year. In neither case were the results what was expected.

At Gelligaer the two large areas of anomaly to the northwest of Gelligaer I were examined, each by means of a machine-cut trench 1.8m wide; a third trench was cut through the feature believed to be a ditch forming part of the defences of this first fort. The large areas had been thought to be buildings, a possible courtyard building and a possible bath-house, both apparently marked by earthwork platform.

Platform 1, the platform/anomaly furthest from Gelligaer II, which had been interpreted as a bath-house, was examined by means of a trench whose eventual width was 30m and width 1.8m. The anomaly proved to be an area of burning on the subsoil, which at this point had also seen the formation of iron pan. No Roman material at all was recovered from this trench, and the date of the burning was not established.

Platform 2, the site of the presumed courtyard house, was examined by means of a trench 20m long. It proved to contain a pit cut into the subsoil and containing the

base of an amphora, other more ephemeral features cut into the subsoil, and a collection of sherds of amphora in a roughly linear alignment at the bottom of the topsoil; it seems probable that these sherds of amphora, together with the base in the pit, may have produced an anomaly which had been interpreted as a wall line. There was no depth of stratigraphy in this trench, which also contained thin soil deposits containing Roman material over the natural subsoil. Although only a selection of these could be excavated in the time available, there was nothing to suggest that there had ever been a building here.

The third trench, 5m long, examined the ditch. This proved to be relatively narrow and shallow (little more than 2m wide and under 1m deep) and could not have been a defensive feature. It contained no datable material. It seems likely that it was connected with the track mentioned under this parcel in the title apportionment (though not graphically depicted on the accompanying map).

The results of this field evaluation show that Roman activity was present, but that it was confined to the northwestern end of the site, which gave the appearance of possible settlement edge activity. It probably represents the furthest extent of the *vicus* attached to Gelligaer II.

Neath

Excavations to test the results of the geophysical survey on Cwrt Herbert playing field at Neath were circumscribed by the need to avoid disturbing the rugby pitches. The aim was to excavate two trenches each 2m x 10m, one on the line of the presumed early fort defences and the other to examine the feature which appeared to be road running out of the northwestern gate of the fort.

The trench over the line of the defences, which was sited to pick up the anomaly identified as the ditch, proved to contain a series of dump deposits of clay with some patches of cobbles, all dipping away to the northwest. The 'ditch' proved to be an extensive area of iron pan which had developed behind the most substantial and dense of the clay deposits, which in turn overlay a layer of large cobbles. It is considered that the clay deposits represent an early rampart, whose outer face is represented by this particularly substantial clay deposit and the cobbles, which had impeded drainage to such an extent as to cause the formation of the iron pan. Unfortunately the iron panning had an undulating surface and did not preserve any evidence for a timber corduroy. The deposits above and behind this were very similar in nature, and contained large patches of dense clay. It seems likely that this represents the slighting of the rampart, with material from its body dumped in front. No ditch was identified, but it was considered likely that it lay at the northwest end of the trench, below the deposits formed by the slighted rampart. The only stratified finds were fragments of brick or tile in the rampart. These were too small to date, but were consistent with Roman material.

The other trench was located in the only possible position over the presumed road line between a rugby pitch and the running track, but even so it had to be curtailed to 7.5m to avoid impinging on the former. It was however correctly sited to pick up the presumed road. Excavation revealed no sign of this. A narrow linear cobbled feature towards its northeastern end over the natural subsoil appeared to be a foundation of fairly insubstantial nature; another such feature appeared running across the northeastern end, but its full width could not be ascertained. On the other side of the first cobbled foundation, an ephemeral linear feature of slightly darker colour could not be seen clearly in plan, but was more readily distinguishable in section as a gully. There was no sign of a road. This trench produced two small fragments of greyware.

The results of this excavation confirm that there was an earlier fort extending a little further to the southeast than the stone-walled fort. No evidence was seen for a road running out of the rear gate, but there would appear to be activity of some sort. Previous work has identified a building between the second trench and the fort (Maynard 1993) but nothing was seen in the area of the running track, and this area would appear to mark the furthest extent of extramural activity.

Pentwyn Triley

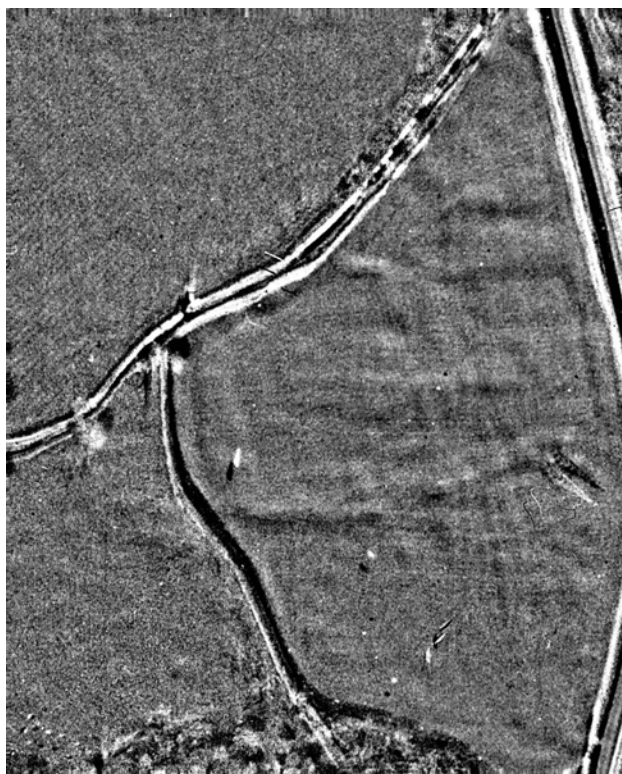
An air photography search in the area of Pentwyn Triley, north of Abergavenny, revealed a rectangular enclosure with rounded corners in the field next to the one in which cremations had been discovered. A walk-over survey confirmed that the defences were still extant in the form of slight earthworks.

A site of this form could either be a native settlement that continued in occupation during the Roman period, similar to Whitton (Jarrett and Wrathmell 1981), or a small fort. Without fieldwork, it is not possible to determine which is the case.

References:

Jarrett, M G and Wrathmell, S, 1981, *Whitton: An Iron Age and Roman farmstead.*

Maynard, D M, 1993, *Archaeological field evaluation Cwrt Herbert Playing Fields, Neath, West Glamorgan* GGAT unpublished report no.93/036.



Air Photograph showing enclosure at Pentwyn Triley, Monmouthshire

GGAT 76 Southeast Wales Urban Waterfronts

The historic ports and harbours of Southeast Wales have played a crucial part in the history and development of the region. The well-documented maritime trade in the region during the medieval, early post-medieval and industrial periods has done much to shape the nature of modern patterns of settlement and industry. Despite the archaeological importance of the harbours and ports, their character and extent remain poorly understood. On-going redevelopments, in particular the increase in waterside developments, mean that this important and fragile, yet poorly understood, archaeological resource is under continued threat.

A detailed assessment of these ports and harbours is therefore being funded by Cadw, so that our understanding of the potential of the maritime archaeological remains is enhanced and informed decisions regarding the future conservation of this resource can be made. Phase 1 of this project was carried out in 2003-2004 and considered Chepstow, Cardiff, Newport and Swansea. Phase 2 was undertaken in 2004-2005, and studied 37 small harbours and ports in the Southeast Wales region.

The sites were identified from *The Welsh Port Books* (Lewis 1927) and those identified during the coastal survey (Locock 1996a, 1996b, 1997, 1998). A cut-off date of 1800 was implemented in order to exclude the large-scale dock developments

of the industrial period. In the cases of the major tidal rivers, the upstream limits of the study limits were as follows:

River Wye: Tintern

River Neath: Neath

River Usk: Caerleon

River Tawe: Swansea (Phase 1)

River Taff: Cardiff (Phase 1)

River Loughor: Loughor

Study areas were drawn up and Sites and Monuments Record and historic mapping data overlaid onto digital base maps. A programme of field visits was undertaken, in order to assess the current state of the sites, identify any threats to existing sites and to locate previously unrecorded sites.

Having assessed the four major ports in Phase 1 of this assessment, and a further 37 minor harbours and creeks in Phase 2, it has been possible to classify these 41 sites into four main categories, depending on the nature of past maritime activity at each, and therefore the potential for the survival of archaeologically significant remains. These four categories are summarised below.

Major ports

- Chepstow
- Newport
- Cardiff
- Swansea

The potential of these four major ports has already been discussed in detail in the Phase 1 report (Howell and Dunning 2004), and clearly includes the possibility of sizable structures and associated artefacts and deposits being located in these areas which, due to economic factors, are currently undergoing major programmes of redevelopment.

Subsidiary ports

- Caerleon
- Neath
- Loughor

These locations are considered to have been significant subsidiary ports in pre-modern periods. It may be significant that all three were the sites of Roman forts, possibly due to their strategic locations on navigable rivers. These locations clearly continued as important military and maritime sites during the medieval period, and shipping activity developed into the post-medieval period, when they acted as foci for trade and possibly transshipment sites. As such, they have significant potential for the survival of major structures of Roman to post-medieval date, if not earlier, although some earlier features may have been removed by later developments. Situated close to the conurbations of Newport and Swansea, these areas are under considerable pressure from redevelopment, often focused on riverside locations, and consideration to these important remains should be afforded during the planning process.



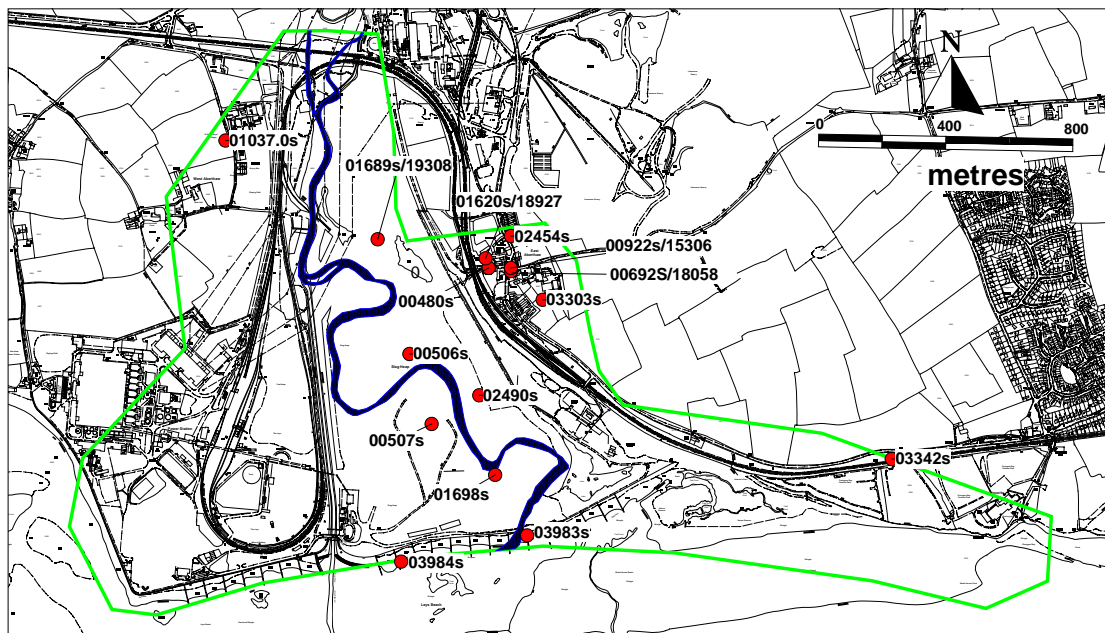
The River Mouth at Aberthaw, Vale of Glamorgan

Major pills and havens

- Tintern
- Goldcliff
- Mathern and St Pierre
- Magor
- Black Rock

- West Pill
- Caldicot
- Peterstone
- Rumney
- Aberthaw
- Col-hugh and Llantwit Major
- Aberavon and Port Talbot
- Oystermouth
- Port Eynon
- Penclawdd

These sites are considered to have been major pills or havens, and as such are likely to have had some formal waterside structures in the past. Although there may not have been the larger structures likely to have been found at the subsidiary ports, a range of timber and stone features from the prehistoric period onwards may survive in these areas. The pressures of development and erosion vary between these sites, but their archaeological maritime potential should be protected as far as possible.



Aberthaw, Vale of Glamorgan: Plan showing extent of Coastal Port Zone and archaeological interests.
 This map is based upon Ordnance Survey material with the permission of Ordnance Survey on behalf of Her Majesty's Stationary Office © Crown copyright. Unauthorised reproduction infringes Crown copyright and may lead to prosecution or civil proceedings. Glamorgan-Gwent Archaeological Trust Ltd 100017916 (2005)

Minor pills and havens

- Hunger Pill
- Portskewett
- Styne Pill
- Cillister Pill
- Cold Harbour Pill
- Ebbw
- Penarth
- Sully
- Barry
- Ogmore
- Porthcawl
- Black Pill
- Pennard Pill
- Nicholston Pill
- Oxwich
- Wormshead
- Burry Pill and Great Pill
- Lanrhidian Pill
- Salthouse Pill

It is considered unlikely that these sites were important for maritime activity in the pre-1800 period, although evidently some, such as Penarth and Barry, rapidly developed major ports during the Industrial period. Whereas large scale features may not be present at these minor pills and havens, some have evidently been in use since prehistory and therefore there remains the possibility that vessels, artefacts and smaller scale structures may yet be disturbed by continuing erosion or future developments in these locations.

GGAT 78 Prehistoric Defended Enclosures

This pan-Wales project follows on a pilot carried out by Gwynedd Archaeological Trust, with the aim of reviewing defended enclosures of the late prehistoric period in respect both of morphological features and of condition. The first year's work concentrated on sites in Glamorgan. A database of 702 enclosure sites in Glamorgan and Gwent was drawn from the Sites and Monuments Record and National Monuments Record. The data on the Glamorgan sites was then refined, and sites which were not defensive or not prehistoric were rejected. Enclosures under 20m across were rejected as they were considered too small to be likely to be defended enclosures of the type under consideration, and those of about 500m or greater across were rejected as too large, unless there was good evidence to show they were defended. With regard to form, enclosures defined by walls rather than earthworks were rejected, as were sites where the enclosing banks and ditches seemed that they had never been sufficiently massive to be defensive. Sites for which there was good evidence for occupation at periods other than, and not including, the prehistoric were also rejected. The total number of sites retained in the project database for Glamorgan was 217. For these sites, a series of forms was compiled giving detail of defences, entrances, interiors, annexes and other associated features. For many sites, this information was readily available in the Glamorgan *Inventory* (RCAHMW 1976) or from air photograph plotting by RCAHMW. A total of 24 sites was visited, drawn from those where there was a certain level of information requiring further clarification. It was considered that an additional 82 sites which had minimal information (amounting to just enough to suggest that they might be prehistoric defended enclosures) might benefit from a visit to see if it is possible to determine that this is the case; these have been recommended for fieldwork at a future date. Information obtained during the site visit was added to the database, photographs were taken and sketches were made where appropriate.

The results of the survey show that new site information from the last 30 years has not changed the overall pattern noted by RCAHMW, that defended enclosures were rare in the uplands. On the other hand, no sites were noted in valley bottom or floodplain situations. Of those sites where information was available about defensibility, 54 were classed as being in good defensive locations, 40 in semi-defensive locations, and 41 in non-defensive locations. The defences with which the sites were provided ranged from very massive multiple banks and ditches, to much slighter single defences, and were sometimes, but not always, connected with the natural defensibility of the site. Univallate sites are by far the commonest form, with 76 examples. However, it is possible that this number may include sites where an additional ring or ring of defences has been slighted, and air photograph and geophysical evidence from two otherwise univallate sites suggests that they may have had an outer palisade beyond the earthwork defences. Bivallate enclosures with closely set defences account for 20 examples, widely set bivallate defences for ten, closely set multivallate defences for twelve, and widely set multivallate defences for

eleven. The vast majority of recorded entrances are of simple type (43 examples), consisting of no more than a gap in the defences, although the excavations at Coed-y-cymdda and Whitton show that the ends of the bank were faced with timber constructions at these two sites (Owen-John 1988, 59-65; Jarrett and Wrathmell 1981, 12-16), and similar arrangements are likely at other, unexcavated, sites. An earthwork entrance passage occurs in thirteen examples; other entrance types are rare (two entrance passage with guardchambers, three barbicans/hornworks and two complex). As far as the shape of the interior is concerned, it was not always possible to tell from the information available. Where it could be assessed, the most common shape was sub-circular, with 66 examples, including half-circle enclosures on cliff- and cwm-edge sites; 21 sites were true circles, or sufficiently close to be classed as such. There were 28 sites described as subrectangular and three as rectangular. Five sites were polygonal, seven triangular and eighteen irregular. In some cases it was not possible to determine the shape of the fort from the information available. There appears to be very little in the way of significant groupings visible in the locations of the various shapes of enclosure, apart from a predominance of circular ones on the lower reaches of the Coalfield in Neath Port Talbot. Knowledge of the internal details of these enclosures is limited not only by preservation of the upstanding earthworks, but also by the fact that few have ever been excavated. Twenty-six sites have internal buildings recorded, almost all being curvilinear. Annexes and additional enclosures are definitely present at only seventeen sites, with one possible additional one; the majority (ten examples) are detached. Seven sites are noted as having possible associated field systems, though it is not certain that these are contemporary. Most have no record of the form of these fields, but where it is recorded, they are small, possibly paddocks or garden enclosures.

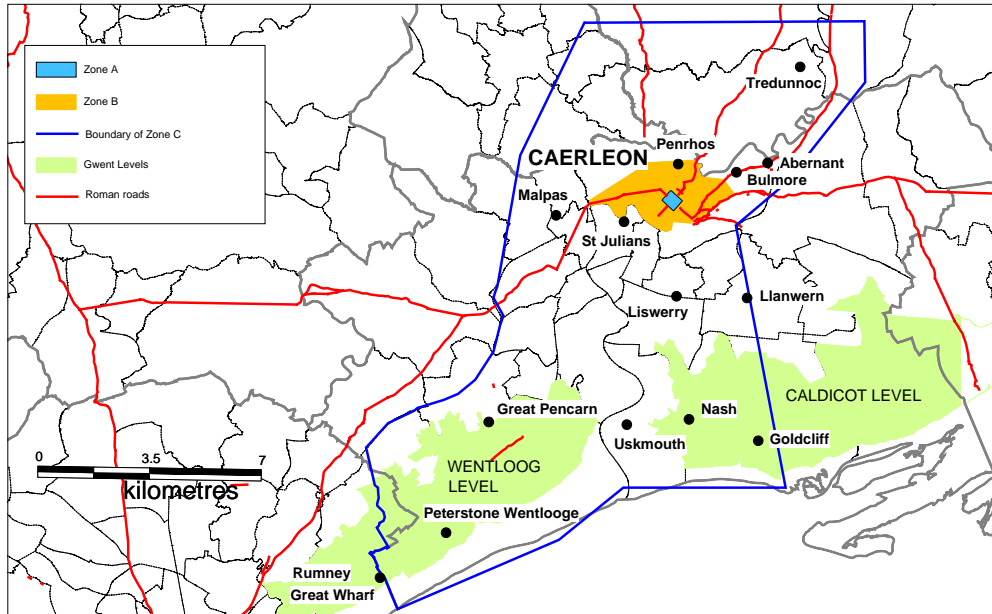
References:

Jarrett, M G and Wrathmell, S, 1981, *Whitton: An Iron Age and Roman farmstead*

Owen-John, H S, 1988, The hillslope enclosure in Coed y Cymdda, near Wenvoe, South Glamorgan, *Archaeol Cambrensis* 137, 43-98

GGAT 79 Caerleon Environs Research Agenda

The preparation of a research agenda for the Roman legionary fortress of Caerleon and its environs was recommended by the research framework for Wales drawn up in 2002-03 (see cpat.org.uk/research/serom.htm). Its aim was to provide a review of existing data and outstanding questions, and provide broad proposals as to how they might be addressed in future work. It was seen as the first step in a new integrated approach to archaeological work in Caerleon, to identify the extent of our knowledge, the main gaps in it, and the questions which should be asked during any future work in the light of local, regional, national and international priorities. It did not itself set out to answer these questions, but sought to provide broad proposals as to how these might be addressed. A working group of people with interests in the subject was assembled, including representatives from the National Museums and Galleries of Wales (Cathays Park and Legionary Museum) and the Universities at Cardiff and Newport.



A survey area around the fort was agreed upon by the working group, and divided into three zones. Zone A comprised the fortress as defined by the ditch system. Zone B comprised the area immediately outside the fortress, occupied in the main by the civil settlement and the cemeteries, and the area of settlement on the southern bank of the Usk around the bridgehead, and the associated cemetery on the lower slopes of Chepstow Hill. This zone was bounded to the south and southwest by the River Usk; to the north by the crest of Lodge Hill; to the east by the Sor Brook to the north of the Usk, and to the south of it by the nameless stream which runs almost opposite down Chepstow Hill; and to the southwest by the crest of Chepstow Hill. Zone C comprised a more extensive area. To the south of Caerleon, it extended along the Severn Levels from Rummy at the west to Goldcliff at the east; the boundary then ran inland to Coldra, where it turned to follow the crest of the escarpment forming the east side of the Usk valley nearly as far as Llantrisant, then ran directly westwards to Croesyceiliog before turning southeast and south to meet the line of the M4 motorway at Junction 27.

Work started with a review of existing data. The fortress and its defences (Zone A) were broken down into a series of discrete areas (*insulae*, elements of defences, elements of road network), and each of these was assessed in terms of extent of area excavated, results of excavation, and reliability of interpretation. The same exercise was also carried out for Zone B. In Zone C the approach was to examine the data available for all known sites. Following the data review stage, the working group met to discuss the issues which remained to be addressed, and to suggest methodologies for dealing with them. Emphasis was placed on the identification of clearly defined targets, and the formulation of strategies for dealing with them within the foreseeable future.

The resultant report comprised the assessment of existing data, a short review of ongoing and recently completed projects (divided into excavation and survey, post-excavation-related work, and finds studies), recommendations for further work in each of the three areas, with separate section identifying projects which could be rapidly implemented and those which must be considered over the longer term. A bibliography of published and grey literature was also appended.

Following the issue of this report, it was decided that the working group with an extended membership should reconstitute itself as the Caerleon Research Committee, in order to promote work on the projects identified.

GGAT 80 Southeast Wales Ironworks

The study, initially limited to the northern coalfield rim, specifically those sites described by Ince (1993), was based on a comparative exercise, comparing the 1st edition OS map depiction with modern map and Aerial Photographs in an attempt to identify surviving and visible remains, while also identifying buried potential and sterile areas. The boundaries of the study were taken as the limits of the ironworks, and were not extended to the wider water management, transport and the extraction sites. The project also involved interrogation of the computerised Regional Sites and Monuments Record, supplemented by all the other readily available data. With the enhanced information available to this project, the methodology has involved a detailed desk-top element, including map regression. More general works and articles and other readily available sources have also be consulted and expertise drawn from historians and archaeologists working in the area. It was not the intention, however, to carry out any original research, though where this approach was considered to be relevant and beneficial this was identified. Map regression (early OS, Tithe and Estate maps) and consultation of aerial photography to understand and determine the development/phasing and integrity of the immediate industrial landscape centred on each of the selected Ironworks has been carried out. In this way a comparison between the historic cartographic evidence and the modern map/aerial photographs can be made to allow the current extent of surviving identified landscape areas and key identified elements to be mapped.

A number of wider ironwork areas, based on the information contained in Ince 1993 and a rapid mapping exercise, including limited map regression, were identified, and defined on modern 1:2500 OS paper map base, and adopted for the initial documentary, cartographic and aerial photographic baselines searches (including Sites and Monuments Record and National Monuments Record searches).

Thereafter the wider areas were further revised and core ironwork areas defined, primarily using cartographic and aerial photographic information, more detailed map regression, tied into baseline SMR, NMR information. The result was the identification of some 35¹ core ironworks areas; these are given in the table, below.

Ironworks Numbers	Ironworks Name	Grid Reference	Ironworks Numbers	Ironworks Name	Grid Reference
001	Pontypool (Upper Race, Blaendare)	ST 272 997	019	Ynys Fach	SO 046 060
002	Varteg	SO 265 055	020	Cyfarthfa	SO 037 068
003	Golynos	SO 260 047	021	Penydarren	SO 058 072
004	Abersychan (British)	SO 258 035	022	Dowlais	SO 065 074
005	Pentwyn	SO 265 033	023	Ivor Works	SO 068 080
006	Clydach	SO 227 128	024	Hirwaun	SN 993 045
007	Blaina (inc Cwmcelyn)	SO 199 081	025	Llwydcoed	SN 993 045
008	Coalbrookvale (inc Trostre)	SO 194 095	026	Gadlys	SO 001 031

¹ The actual number of ironworks is 38; several are included under one IW number due of proximity and development such as IW007 Blaina, which includes the Cwmcelyn Ironworks and IW008 Coalbrookvale, which included Trostre Ironworks.

009	Nant-y-glo	SO 192 105	027	Abernant	SO 006 035
010	Ebbw Vale	SO 174 097	028	Aberaman	SO 015 003
011	Victoria	SO 172 076	029	Ystalyfera	SN 764 084
012	Beaufort	SO 170 115	030	Ynyscedwyn	SN 785 092
013	Tredegar	SO 144 091	031	Onllwyn	SN 839 103
014	Sirhowy	SO 144 102	032	Banwen	SN 868 104
015	Rhymney	SO 113 069	033	Melincwrt	SN 824 019
016	Dyffryn	SO 071 032	034	Venallt	SN 863 049
017	Pentrebach	SO 065 035	035	Abernant	SN 882 063
018	Plymouth	SO 057 048			

It was found that historically, many of the ironworks areas had expanded to take in significant areas of valley landscape; this was particularly the case with the larger ironworks conglomerations within the upper valleys of the Blaenau, such as at Nant-y-glo, and Ebbw Vale. Conversely, in the case of some of the less significant ironworks, such as the once jointly operated Varteg and Golynos, it was found that the constituent parts of the core area were often spread over some distance, with core activities being shared between different sites.

A cross-section of ironworks within the study area with the exclusion of the Merthyr Tydfil area, extensively covered by recent Historic Landscape Characterisation work, were selected for site visits. The site visits in conjunction with documentary and cartographic sources were undertaken to validate the ironwork boundaries in their current state and to establish the current condition/survival, potential for survival of the archaeological resource within the identified ironwork areas. To this end a rapid site visit was made to nineteen of the thirty-five identified ironworks.

The analysis of cartographic, documentary and aerial photographic material not only allowed the boundaries of the core ironworks areas to be identified, but also enabled a general overview of site condition to be established. In this way the archaeological significance or potential of the resource could be estimated and broken down into the following:

- archaeologically sensitive areas
- areas of archaeological potential (low-high)
- sterile areas



Ebbw Vale Ironworks Furnace Bank

The archaeological resource (in terms of condition, archaeological value, presence of visible remains and buried potential) in relation to the level of current statutory protection was assessed for each ironwork core area. It was found that of the 35 core ironwork areas, 21 retained visible remains, while 30 were considered to have some level of buried potential. In addition, fifteen of the core ironwork areas examined were found to have some degree of current statutory protection (eg

Scheduled Ancient Monuments or Listed buildings); that is between 40% and 43% of the original resource within the study area limits. The analysis indicated that of the core ironworks areas with visible standing remains, 75% are currently protected to

some degree through statutory protection, while just 50% of ironwork areas with buried potential are similarly protected.

An analysis of the protected resource against surviving monument class (ie furnaces, charging ramps/platforms, calcining ovens/coking oven, casting houses/foundries, rolling mills, engine houses, waterwheels/pits, offices and other buildings), where surviving as visible standing, or positively identified buried remains, was carried out. This specifically allowed the identification of classes of monument underrepresented within the current protection regime, and also identified core ironwork areas, which could benefit from the extension of existing protection. Levels of protection of the resource were found to be generally good, with a few notable exceptions.

A review of the current identified threats was undertaken using Unitary Authority development plans as a basis. Other potential threats, mainly from dereliction were identified in particular from the site visits. A range of general recommendations was produced to increase an understanding of the archaeological potential of the resource and to ensure the protection of above and below ground remains.

Reference

Ince P 1993 *The South Wales Iron Industry 1750-1885* (Merton Press)

REVIEW OF CADW PROJECTS APRIL 2005—SEPTEMBER 2006

GGAT 61 Historic Landscape Characterisation

The characterisation work for the Merthyr Tydfil Historic Landscape was posted on the web in June 2005, following translation into Welsh and selection of illustrations. This entailed the formatting of the content of the Merthyr Tydfil Historic Landscape Report as web page, and the conversion of the photographic illustrations and maps illustrating the historic landscape character areas into a compatible format.

Additional copies of the Blaenavon Historic Landscape Characterisation report have been produced and supplied to Cadw.

GGAT 67 Tir Gofal

The Trust has continued processing Year 4 successfully ranked farm applications (HE1s). Since the beginning of April 2005, 30 applications (to end of August) have been processed on behalf of Cadw and sent to the CCW offices in Southeast Wales. These include one application on additional lands. Advice was also provided for a newly-discovered Roman fort on a farm where the Tir Gofal agreement was being reviewed after its initial five-year period.

GGAT 72 Prehistoric Funerary and Ritual Sites

Following the conclusion of the main phase of fieldwork, 100 sites were identified as either missed National Monuments Record entries or as having been added subsequently to the Sites and Monuments Record and National Monuments Record. These sites are the subject of this year's work. A number of further sites, discovered during recent fieldwork but not on the Sites and Monuments Record have been notified to the project worker since the project proposals were submitted. Their numbers currently stand at seven. A database has been compiled of all the new sites, and fieldwork is on-going. Although the new sites include some fine examples of

their type, there has so far been no reason to revise the general conclusions about prehistoric funerary and ritual practice in the area in general.

GGAT 75 Roman Vici and Roads

This year's work is focused on the civil settlement at Caerleon. The map compiled for the report on the 1980s excavations at Mill Street (Evans 2001, 492-3 fig 125) has been digitised as a series of MapInfo tables, to allow future work to be integrated easily. A geomorphological survey of the tidal reach of the River Usk and Afon Lwyd above Newport has been commissioned from the Department of Geography at the University of Wales Aberystwyth. The report on this work is expected in the second half of the financial year, and will permit assessment of the survival of the civil settlement in view of river movement after the Roman period. Further geophysical survey has been carried out in two areas on the eastern side of the civil settlement, (Millmead and Uskside) which were the subject of evaluation in 1989-90 in connection with a proposed bypass road. The Millmead survey re-examined the original survey area, for which good definition was not obtained, as well as extending the survey to the east. The survey results (resistivity and gradiometry) suggest that significant activity may be taking place in that part of the area closest to the Mill Street site, but further towards the river the results are equivocal. On the Uskside site it had been hoped to use ground-penetrating radar to separate out the Roman structures known as a result of test-pitting from more recent dumping, but significant scrub development since 1990 made this impossible. The area examined (by resistivity and gradiometry) lay to the east of the original survey area, and the results were again equivocal although they suggested that any Roman activity was confined to the western and southern part of the area. Excavation is planned to examine the most significant anomalies on both sites.

GGAT 76 Southeast Wales Urban Waterfronts

Having completed Phases 1 and 2 of this project, it was considered that the results of this work merit distinct dissemination to a wide range of users. This audience includes bodies concerned with estuarine and shoreline management and development, and waterfront conurbation redevelopment. Potentially this could include, Local Authorities, Statutory Agencies, National Non-Statutory Bodies, Ports and Harbours, UK Nationwide Organisations, Estuary Management and Research Groups, the Private Sector, Environmental Groups, Local Community/Action Groups, Recreation Groups, Organisations involved with Culture and Archaeology, University and Research bodies.

Year 3 of this project therefore will entail the production of a 'glossy' publication for the non-specialist audience, comprising an outline of the works undertaken and presenting in visual (map) form key outcomes and constraints with further advice and contact information. Text has been prepared for this booklet, and images selected, layout designs are being produced.

GGAT 78 Prehistoric Defended Enclosures

The current financial year's work will concentrate on sites in Gwent. In the first half of the year, as much as possible of the database on monument form is being compiled from existing sources, and sites are being selected for visits in the second half of the year.

GGAT 80 Southeast Wales Ironworks

The study has been initially limited to the northern coalfield rim, specifically those sites described in Ince 1993 *The South Wales Iron Industry 1750-1885*, Merton Press. Approximately, 30 major blast furnace iron-producing sites are located within this area.

In year two of the project the study was extended outwards from the core of manufacturing and processing sites to examine the routes of supply, in particular the limestone railways and other early transport infrastructure.

The history of these is well-studied, but this has been largely document-led and there has been little in the way of fieldwork to establish what survives on the ground. There has been comprehensive coverage of several of the ironwork-related transport systems in the Southeast Wales area: the Merthyr Tramroad (Archaeological Investigations); the tramroad network around Blaenavon (Torfaen CBC and RCAHMW); the Brecon Forest Tramroad (S Hughes, RCAHMW). The Herian project and Richard Phipps at Groundwork Merthyr RCT are looking to develop a network of industrial trails, many of which will use tramroads as part of the routes. Of particular relevance to this project is John Van Laun's *Early Limestone Railways* (2001), which provides a detailed account of the best-preserved element of the railway transport system, the lines which carried the fluxing limestone from quarry to furnace.

This assessment project was designed to be field visit/survey driven rather than desk-based led. Though historic map data especially advance drawings for the Ordnance Survey and Board of Health Plans was examined during the initial stage, it was considered that the application of the standard iterative desk-top study methodology to establish and enhance the project database was not the most productive approach.



Mr Glover's Railroad SAM BR 157

Both the Merthyr Tramroad and the area of Blaenavon were excluded from the current project due to the high level of existing coverage. A representative proportion of the resource has been selected for field validation, and consideration for protection, based largely on John Van Laun's *Early Limestone Railways* and information on the ironwork centres and early map sources collated during year one of the project. These are as follows: Abersychan Railway; the Llam-march Railroad; the Llam-march Tramroad; the Clydach Railroad; Clydach incline; Disgwylfa Tramroad; the Trevil Railroad, Rassa Railroad; Hall's Trevil Tramroad; the Rhymney Tramroad; Twynau Gwynion Tramroads (2 lines); Morlais (east) Tramroad and Railway; Morlais (west) Tramroad; Tappenden's Tramroad; and Mr Glover's Railroad. These were chosen on the basis of

association with various ironworking centres, where the surviving remains are considered to be of high quality, and on landscape interconnectivity, in addition to typological and historical considerations. This will allow greater scope for landscape interpretation and understanding of the industrial archaeological resource and the processes involved.

The project involved interrogation of the Sites and Monuments Record, supplemented by all the other readily available sources, including information held on the National Monuments Record, RCAHMW, Aberystwyth. More general works and articles and other readily available sources were also consulted. No original research was carried out for the purposes of the current study. Recommendations for further original study, however, will appear in the final report.

The Sites and Monuments Record data, refined through other sources and rapid map regression, has been assembled into a database, and routes of linear features digitally plotted. The level of current protection and threats was added and following field validation the baseline data was checked and revised as necessary, and information on current condition/value added. Data storage, manipulation, analysis, interrogation, presentation and future update of information has and will be undertaken through GIS system. The Information Technology component of the project has allowed a dynamic, multi-layered digital model for the study area to be produced.

To date the following tasks have been completed:

1. Review and compile baseline documentation

- Rapid review and compilation of documentation
- Review copies of 1st edition 1:2500 OS maps, etc, for each transport site
- Compile source list and bibliography for project
- Collate information on recent and current archaeological survey and investigation of tramroad sites
- Revise existing GGAT lists and produce distribution maps

2. Review current state of protection and threats

- Establish current and proposed extent of scheduling/listing
- Investigate details of current Unitary Authority plans

3. Undertake selective field investigation

- Visit selected transport sites (field validation)
- Ascertain extent of surviving remains
- Ascertain quality of surviving remains
- Undertake rapid mapping (annotated enlarged 1:2500 base), description and photographic recording sufficient to illustrate extent and quality of surviving remains)

GGAT 83 Southeast Wales Cross-ridge Dykes

The Trust has commenced a threat-led assessment of the Short Cross-ridge dykes in Southeast Wales. These are a distinctive monument class in Southeast Wales, particularly in upland Glamorgan. Most of the ridges of the Glamorgan uplands are crossed by short lengths of earthwork banks, possibly designed to control access along these natural route ways. The date of these features is not clear, although it has been suggested they originated in the 8th or 9th centuries AD (RCAHMW 1976, 5-11). The Sites and Monuments Record contains 23 entries of which twelve are protected in whole or part as Scheduled Ancient Monuments. However, initial refining of RSMR data suggests that only seventeen of these entries should be identified as cross-ridge dykes in reality.

The monuments are vulnerable to a variety of natural, animal and human threats. In many cases lowland sites lie within agricultural land and are therefore liable to

degradation through ploughing. In the uplands, new forestry is less of a problem than it was formerly, but replanting can potentially cause significant damage. Other potential threats include windfarms and extension to opencast.

The objectives for this project are:

- Improving knowledge of the form, siting, and extent of the cross-ridge dykes in Southeast Wales
- Reviewing the cultural and historical context of these monuments
- Presenting the archaeological resource as a whole and ensuring an appropriate level of protection
- Enhancement of the Regional Sites and Monuments Record and ENDEX
- Determine management objectives for selected monuments

To date a database has been created of relevant Sites and Monuments and National Monuments Record sites, extracting all references relating to Dyke, and searching other fields such as earthwork (form and type). The data was subsequently refined and non-dyke sites rejected. Initial enhancement of data has been completed using the RCAHMW Inventory, and the tables further refined. Of the initial 23 sites identified as definite or potential upland dyke sites, only seventeen now remain.

The majority of sites are located on Registered Common land and the landowners and relevant Commoners Associations have been contacted. Access negotiations are currently underway and where necessary applications for Scheduled Ancient Monument Consent will be made.

References

- RCAHMW, 1976, *An Inventory of the Ancient Monuments in Glamorgan, Vol I: Pre-Norman, Part III The Early Christian Period*, Cardiff, HMSO.
- Silvester, RJ, & Hankinson, R, 2002, *The Short Dykes of Mid and North-East Wales*, CPAT Report no. **458**

CADW-FUNDED SCIENTIFIC CONTRACTS

No significant calls were made on the CADW Scientific contract in the reporting periods.

POST-EXCAVATION AND PUBLICATION REVIEW

No Cadw-funded post-excavation work took place in this year.

'Grey literature' reports on grant-aided work

The database of all 'grey' literature reports produced for Cadw: Welsh Historic Monuments has been maintained and a copy supplied to the Inspectorate. An update will be sent after the half-yearly review meeting. In the past year the following reports have been produced:-

- *Prehistoric funerary and ritual sites: Bridgend, Rhondda Cynon Taff and Merthyr Tydfil* Report No **2004/027** (GGAT 72)
- *Roman roads in South East Wales: Desk-based assessment* Report No **2004/073** (GGAT 75)
- *Urban waterfronts in southeast Wales* Report No **2004/075** (GGAT 76)
- *Roman roads in South East Wales: Desk-based assessment with recommendations for fieldwork* Report No **2004/093** (GGAT 75)
- *The Roman fortress of Caerleon and its environs: A framework for research* Report No **2004/115** (GGAT 79)
- *Historic landscape characterisation: Blaenafon/Blaenavon. Part 1 and 2: landscape characterisation and management* Report No **2005/002** (GGAT 61)
- *Roman roads and vici in Southeast Wales: Year 3 report* Report No **2005/003** (GGAT 75)
- *Prehistoric defended enclosures in Glamorgan* Report No **2005/028** (GGAT 78)
- *Waterfronts in Southeast Wales: Phase 2* Report No **2005/039** (GGAT 76)
- *Southeast Wales Industrial Ironworks Landscapes Year 1: the core ironworks areas* Report No **2005/56** (GGAT 80)

FUTURE PROGRAMME OCTOBER 2005—MARCH 2006

GGAT 1 Regional Heritage Management Services

The Heritage Management Section of the Trust will continue its regional remit to provide wide-ranging and detailed archaeological heritage management and outreach services, based on Cadw's list of Curatorial Services. Detailed statistical information will continue to be provided to Cadw in our regular monitoring reports.

In the forthcoming half year specifically, the Heritage Section will:

- produce an 'Archaeology and Planning' poster for Unitary Authorities
- finalise production of the Merthyr historic landscape leaflet and arrange distribution
- update Cadw's portion of the Trust website
- prepare an introduction to the Southeast Wales Research Audit for display on the Trust's website, and provide links to the main Research Audit papers on the CPAT website
- prepare general outreach articles on archaeological topics

GGAT 43 Regional Archaeological Planning Services

The Development Control Section of the Trust will continue to provide a detailed and comprehensive planning advisory service to the twelve regional Unitary Authorities, the Brecon Beacons National Park, developers, agents and archaeological contractors. This project continues to rely on the tripartite service provision arrangements in place with the Trust, Cadw and the twelve regional planning authorities. Detailed statistical information will continue to be provided to Cadw in our regular monitoring reports.

GGAT 61 Landscape Characterisation

The Trust has undertaken negotiations with Cadw, Countryside Council for Wales and the City and County of Swansea to secure funding to carry out Historic Landscape Characterisation of the Gower Area of Outstanding Natural Beauty which incorporates the Gower Historic Landscape area ((WGI) 1) included in the Register of Landscapes of Outstanding Historic Interest in Wales. The funding stream to undertake the characterisation work in the areas not included in this register has become available during 2005-2006 and a proposal has been made to Cadw in respect of the area included in the register; this might entail a re-allocation of part of the grant made for an assessment of the Southeast Wales Cross-ridge Dyes (see below).

GGAT 67 Tir Gofal

This on-going project is designed to provide the support services required for the Tir Gofal scheme. Further work on the HE1s for Year 4 of the scheme up to the agreed maximum of 93 will be carried out to ensure that up-to-date archaeological information is available to the Countryside Council for Wales prior to making farm visits. The Trust will also attend further national and regional meetings and assist in the review of Tir Gofal procedures.

GGAT 75 Roman Vici and Roads

Following completion of analysis of fieldwork results a limited circulation report on the in-years work will be produced with short summaries submitted to regional and national journals.

GGAT 76 Southeast Wales Urban Waterfronts

Following the printing of this booklet, a series of tailored presentations to certain 'steering' groups (for example SEP, SELRC, SCOSLA, ASERA, SECG) will be made.

GGAT 78 Prehistoric Defended Enclosures

The project, which in this year will examine the Prehistoric Defended Enclosures in the former counties of Glamorgan, has just commenced. Following database enhancement as a result of standard searches, sites will be selected for field visits. These are scheduled to take place between November 2004 and January 2005 with reporting to be completed by the end of February 2005.

GGAT 80 Southeast Wales Ironworks

Fieldwork has been completed. Once the assembled data has been reviewed, priorities for future recording will be established and proposals for protection made. The report on work in the year will briefly review background history of the transport system associated with the ironworks of the northern coal rim, historiography, recent research, and significance and importance of individual transport sites before reviewing relative historical significance and importance of individual linear sites, and then provide a summary description of surviving remains and review significance, threats and current management proposals, and assess likely impacts and discuss priorities for further recording or protection.

GGAT 83 Southeast Wales Cross-ridge Dykes

Further work on this project may be deferred until 2006-2007 (see GGAT 61 above). If not, once landowners permissions have been obtained and where necessary Scheduled Monument Consent granted the condition and extent of the monument class is to be assessed, this will include hand-auger coring as part of the site visits to determine the presence of buried soils and peats. This will be followed by a programme of fieldwork at one or two locations, based on the results of the initial assessment. A trench will be excavated across the monument(s), to elucidate the nature of the feature and possibly derive material for scientific dating. Results of the assessment will be reported.